

Mr. Jack Short
Secretary General, International Transport Forum, France

Urban Transport Policy – Some Lessons and Challenges

WUTLS Plenary Forum 2

30 June 2010



Urban Travel Policy *Some lessons and challenges*

Jack Short
General
International Transport Forum
Singapore, 30 June 2010

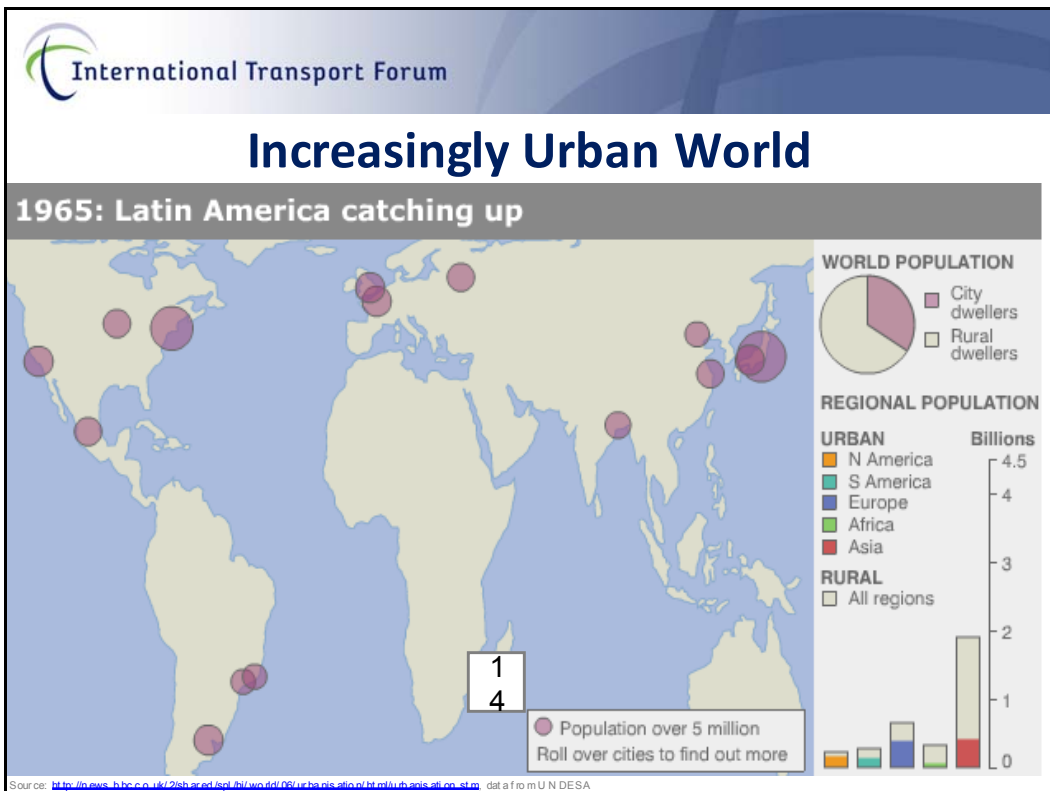
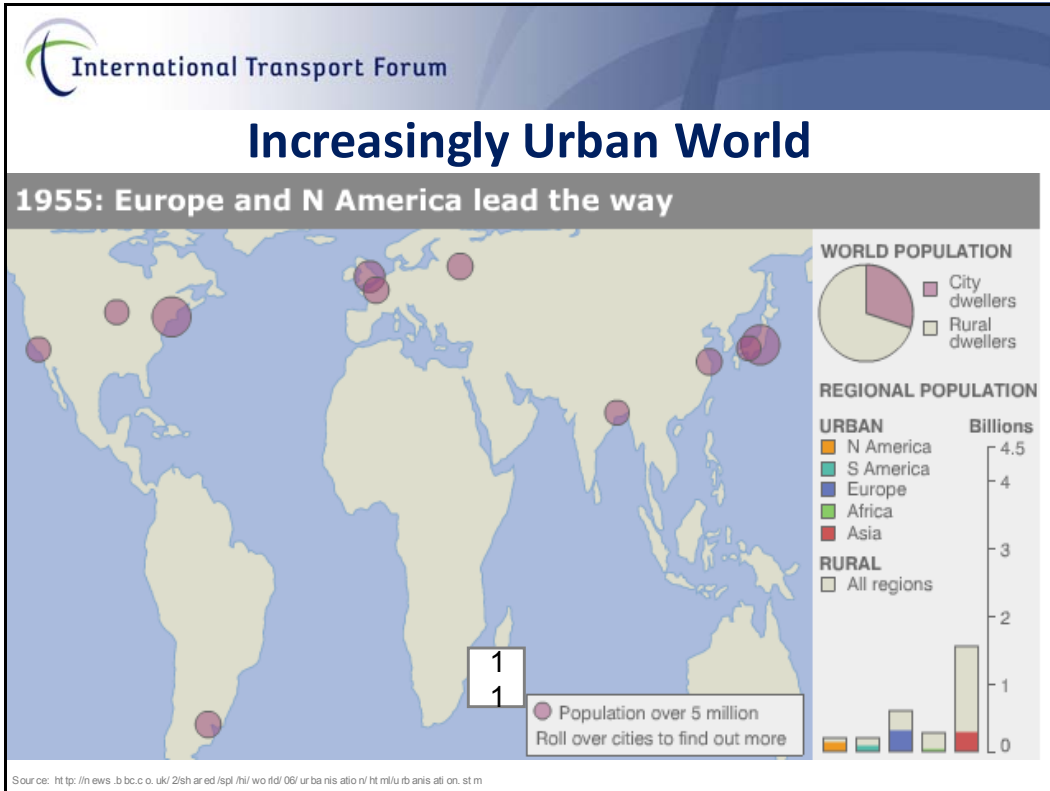


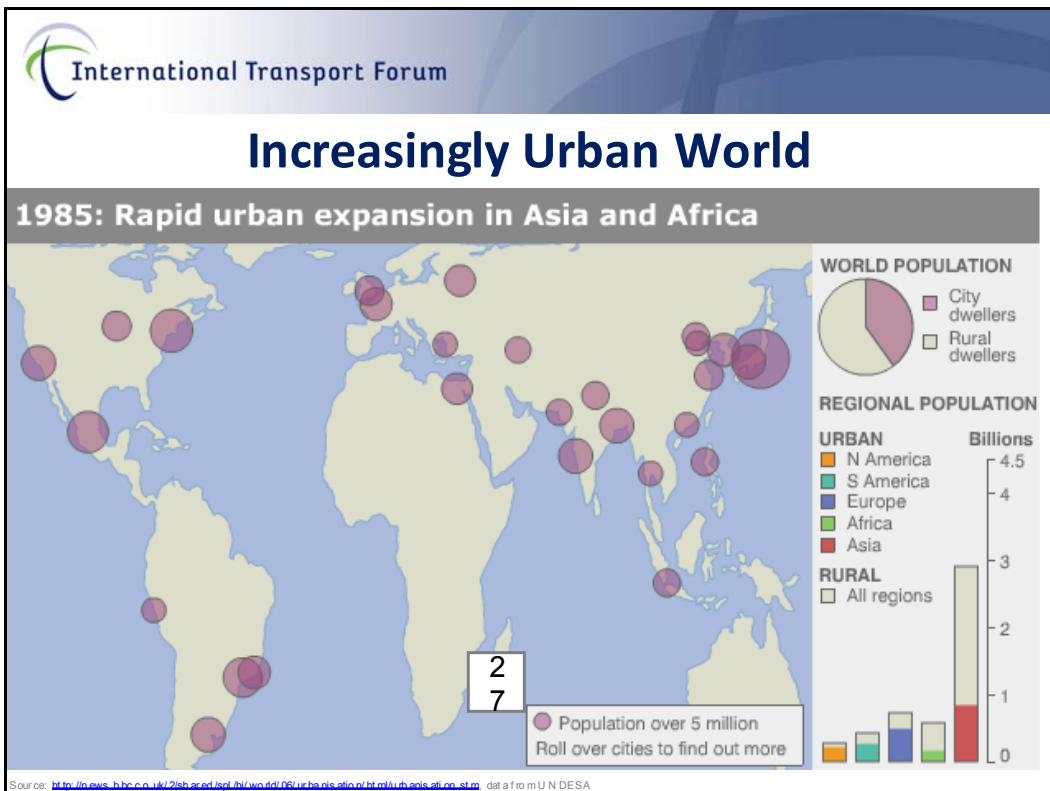
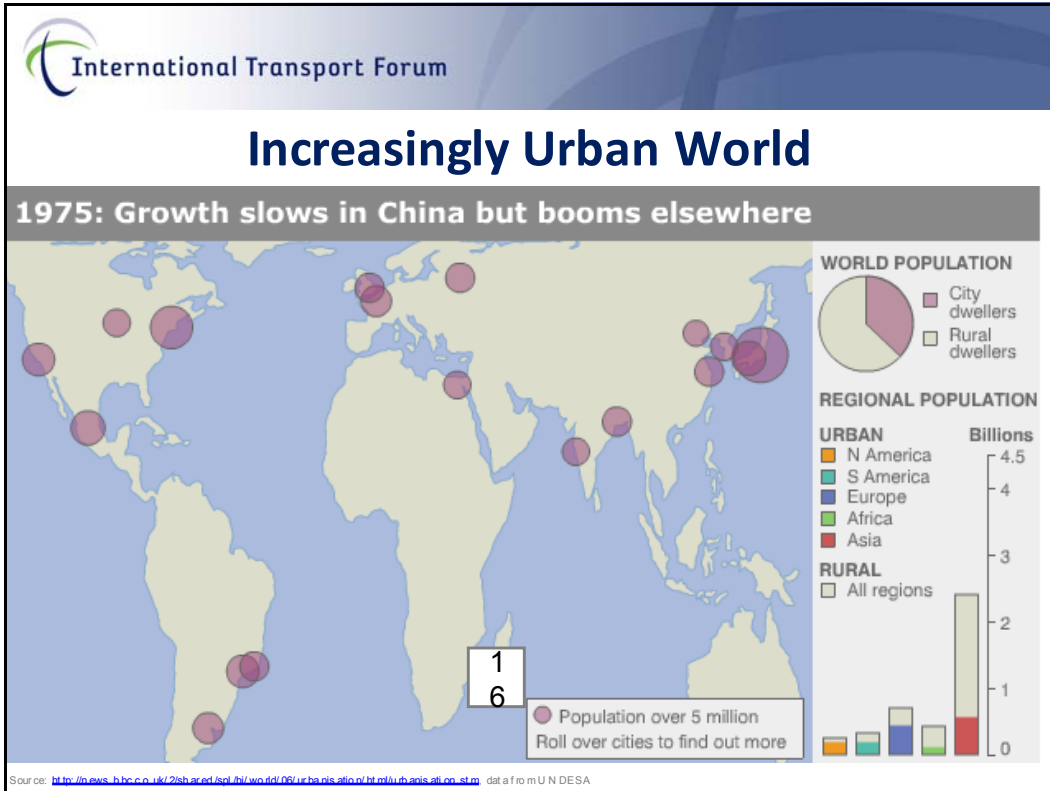
- An inter-governmental organisation for transport with 52 member countries
- A major meeting place for the sector in May of every year (Leipzig, Germany)
- A transport policy think tank

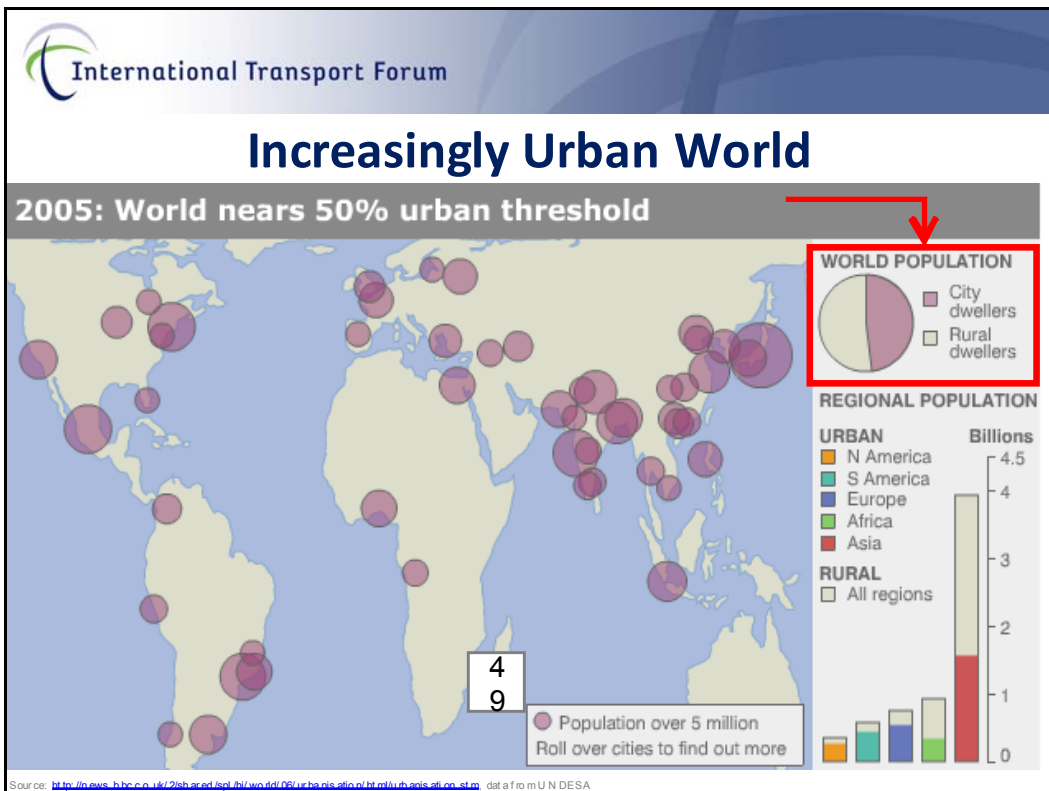
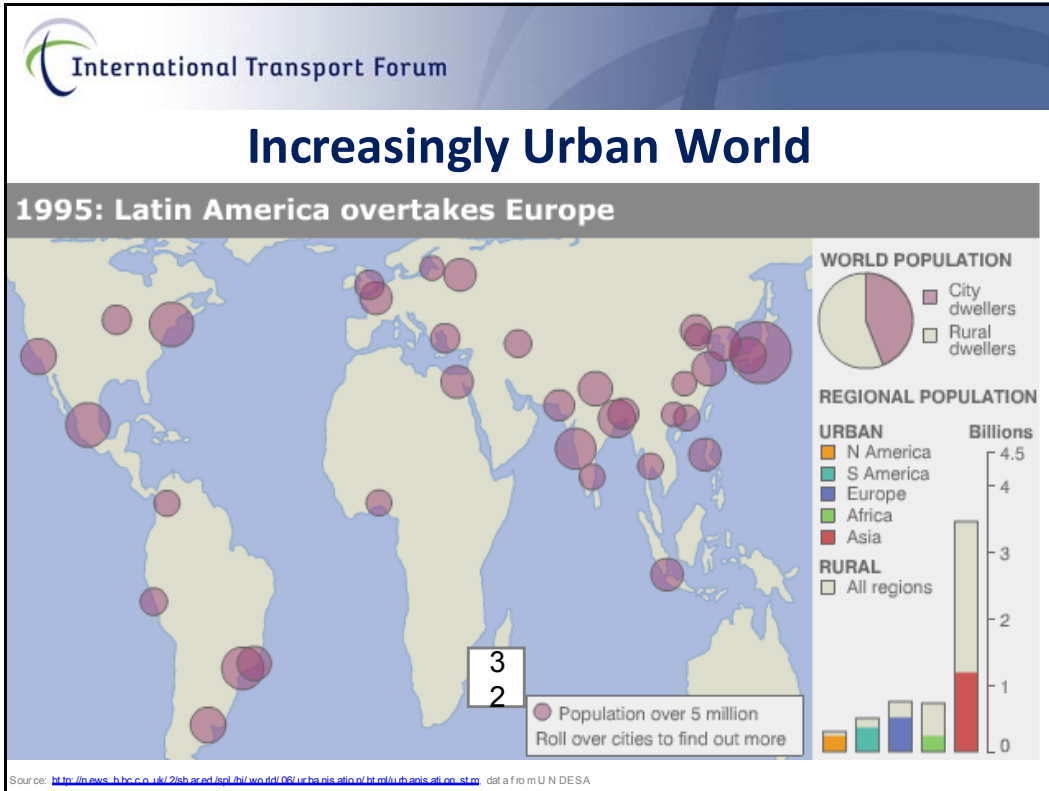


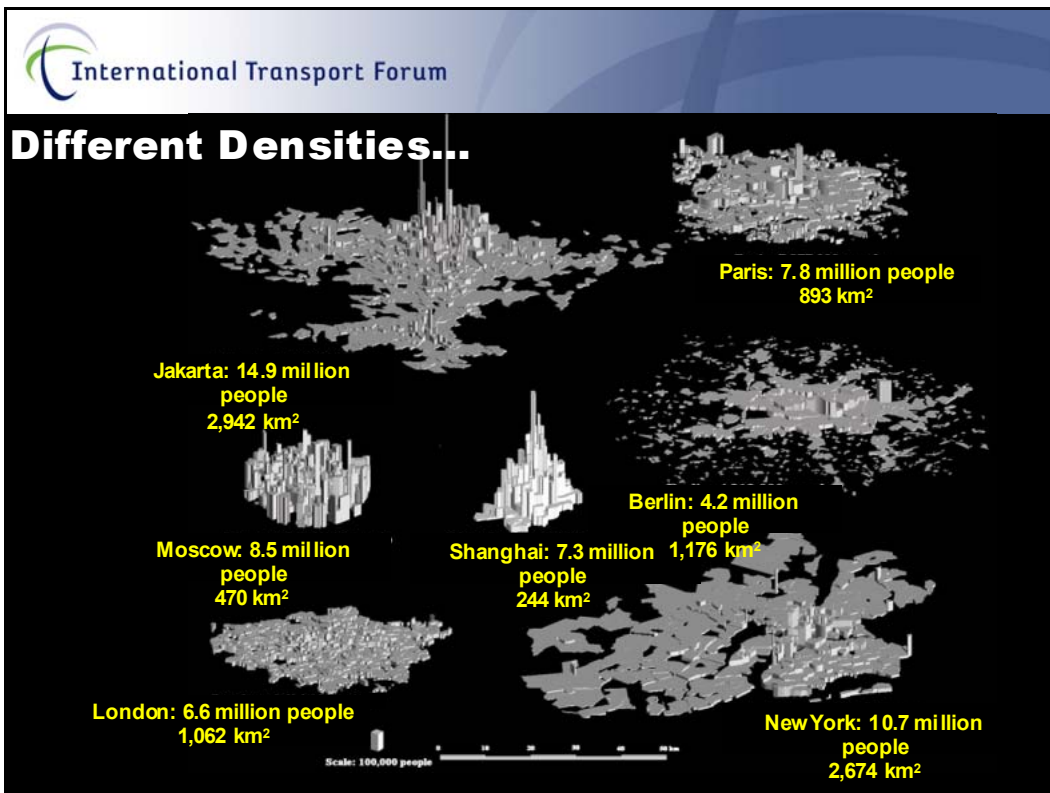
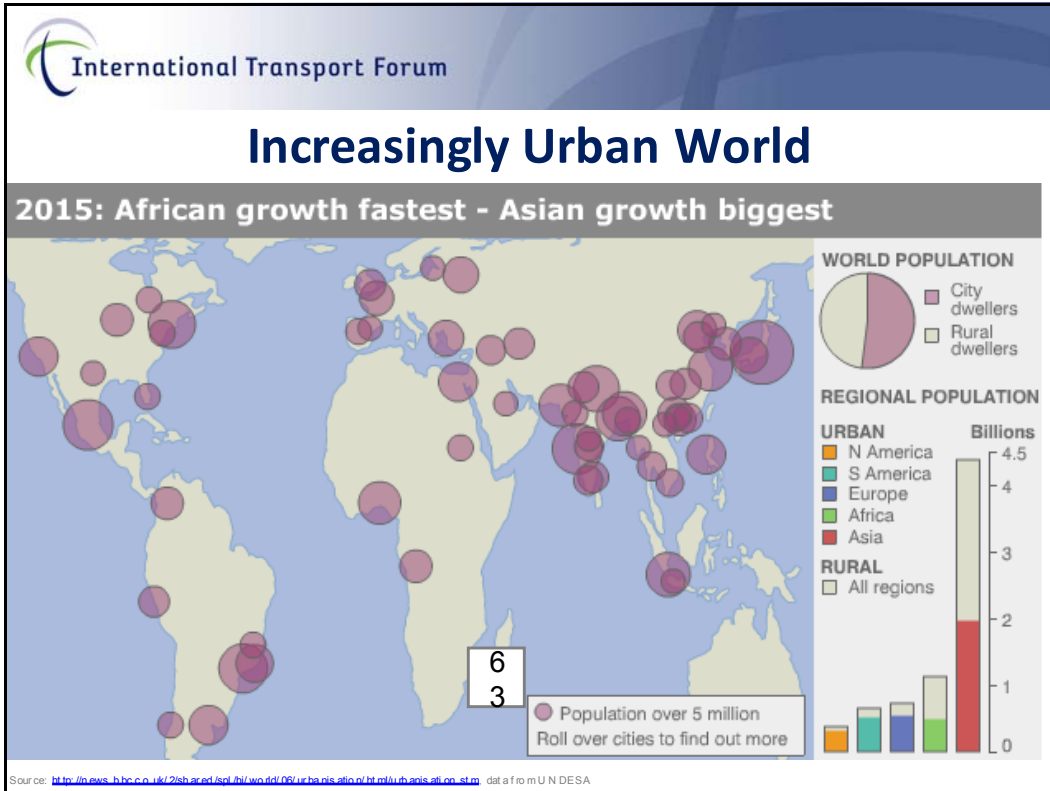
Well-known Trends

- Urbanisation continues (70% of the world by 2050)
 - especially in developing world
- Megacities growing in number and in size











... but fast growth in many cities



Chengdu, Sichuan: 2000



Well-known Trends

- Urbanisation continues
(70% of the world by 2050)
 - especially in developing world
- Megacities growing in number and in size
- Suburbanisation continues
- Car ownership increasing rapidly
(x3 by 2050)
- Ageing of population (> 80 x 3 by 2050)
% over 65 will double



International Transport Forum

Cities as Drivers of Growth

- Economic importance of cities is due to agglomeration economies
- Importance of transport has been understated

Conclusion:

Transport will be a key to economic viability, sustainability and livability of cities



International Transport Forum

Shared Transport Problems

Cities are different but their transport problems are similar:

- Congestion
- Emissions
- Increasing car use
- Access problems for those without cars
- Urban sprawl
- Institutional fragmentation



International Transport Forum

Same Mistakes Everywhere

- Inconsistent policies and ineffective structures
- Failure to manage car use
- Failure to integrate land use and transport planning
- Urban space lost to inefficient users
- Decline in public transport services



International Transport Forum

Emerging Ideas / Towards a New Consensus

- Policies in cities are also a national matter
- City policies start from clear aims
- Need to agree on priorities
- Organisations and structures matter; they need to be broader based
- Integrated approaches in transport needed so that instruments work together



International Transport Forum

Key Issue is Implementation

- ❑ Stated policies are usually excellent
- ❑ But many problems in implementation
 - Split or duplicated responsibilities (investment, modes, planning, enforcement...
 - Incoherent frameworks; between Ministries, cities, ...
 - Incomplete or excessive decentralisation (powers without finance or skills)
 - Poor data and analysis
 - Political will to bring about changes



International Transport Forum

Key Issue is Implementation (cont.)

- ❑ **Some examples:**
 - **Strasbourg**
long term plan, supported by both left and right; political continuity
 - **London**
Congestion charging as an exercise in political leadership
 - **Paris**
> reallocation of urban road space to public transport
> financing mechanism (local tax)
 - **Dublin**
Transport authority with all actors ---- but ---- no teeth
 - **Spain**
Strong regional role (e.g. Catalonia/Barcelona)
 - **Tokyo**
liberalised/privatised public transport services



International Transport Forum

Some Specific Innovations

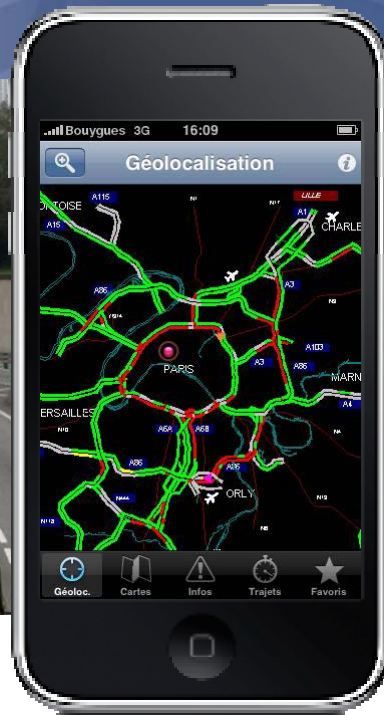


International Transport Forum

Traffic



Real-time traffic information



Source: Sy tadin, France

International Transport Forum

Congestion Charge



Congestion charging payment

Source: Au baler me.com, Transport for London, U K

International Transport Forum

Navigation



Car, public transport, bicycle, Pedestrian navigation

Source: Google Maps, Google Transit

International Transport Forum

Car-sharing




**Real-time car sharing
localisation, reservation
and payment**

Source: ZipCar, U.S.A

International Transport Forum

Bike-sharing




**Real-time shared bicycle
localisation information**

Source: Ve lib, Paris, France

International Transport Forum

Parking





Real-time parking availability, charges and metering

Source: Chicago Parking App, USA

International Transport Forum

Taxis



Real-time taxi localisation, reservation and payment

Source: Taxis G7, France

International Transport Forum

Regional/National Rail




Real-time regional and national rail timetable and fare info.

Source: CFF (Swiss National Rail), Switzerland

International Transport Forum

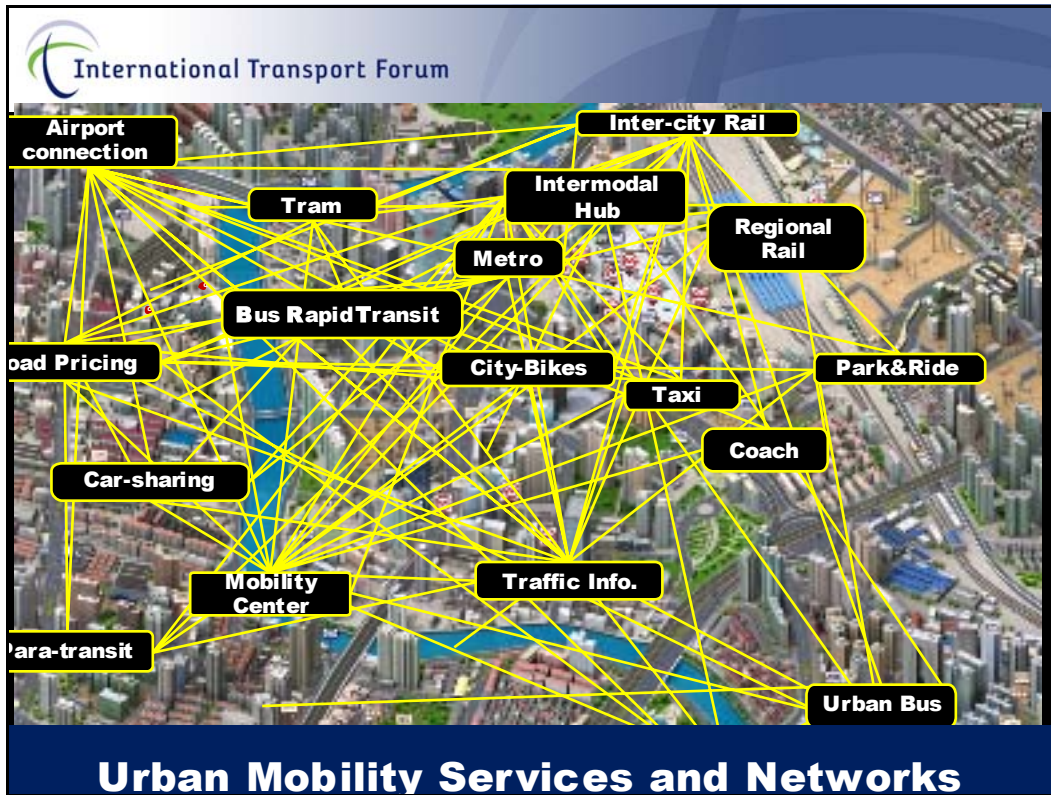
Public Transport




Real time bus/bus station localisation, schedule and fare information

Contactless payment

Source: Seoul Bus App, Korea



International Transport Forum

Conclusions/Key Challenges

- Coherent approach essential
(national -> local with integrated policies and institutions)
- Adequate financing and investment
- Better data and comparative analysis



Thank you

More information, studies, publications

www.internationaltransportforum.org