



THE SINGAPORE POLICE FORCE



SINGAPORE'S EXPERIENCE IN PROMOTING SAFE AND SMOOTH TRAFFIC ON ROADS



OUTLINE

- * INTRODUCTION
- * ROAD TRAFFIC SITUATION
- * THE 3-PRONGED APPROACH
- * LEVERAGING ON TECHNOLOGY
- * THE WAY FORWARD



THE SINGAPORE POLICE FORCE



MISSION

To maintain law and order on the roads of Singapore and promote road safety by influencing the behaviour and skills of road users

VISION



We are Protectors of Lives on the Roads
We inspire the world by making Singapore roads the safest and most pleasant.



We are Champions of Road Safety
We build strategic alliances with our key partners. We work with the community to instill personal responsibility for road safety.



We are a Vibrant Organisation
We value our officers, developing them to their fullest potential. We are one united family.

INTRODUCTION

- **Traffic management in Singapore is carried out by two key agencies:**

- **Land Transport Authority (Ministry of Transport)**



- **Singapore Police Force, Traffic Police Department (Ministry of Home Affairs)**



INTRODUCTION

- **Responsibilities of Land Transport Authority**
 - **Plan, design and regulate all road systems**



INTRODUCTION

- **Responsibilities of Land Transport Authority**
 - **Manage public transport system**



INTRODUCTION

- **Responsibilities of Land Transport Authority**

- **Regulate construction and usage of vehicles**



- **Advise government on all land transport issues**

INTRODUCTION

- **Responsibilities of Traffic Police**

- **Enforce road traffic laws in Singapore**



- **Investigate into road traffic accidents**



INTRODUCTION

■ Responsibilities of Traffic Police

- License all drivers & driving schools



- Educate all road users on road safety

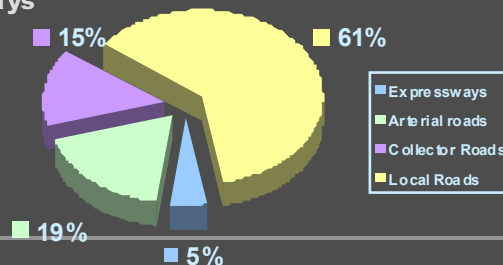


INTRODUCTION

■ Roads

- Total Length = 3325km
- Speed Limit = 40km/h to 90km/h
- Road Types

- Expressways
- Arterial
- Collector
- Local



INTRODUCTION

■ Vehicles & Licences

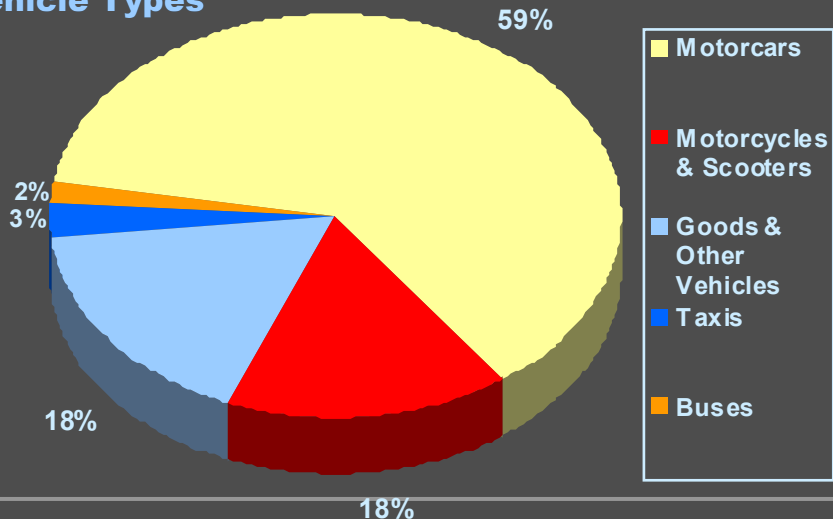
- Total vehicle population
=> 910,546*
- Total number of licence holders
=> 1,409,248
- Total Population
=> 4.839 million
- 1 in 4 persons has a licence to drive/ride



**as at 30 Jun 2009*

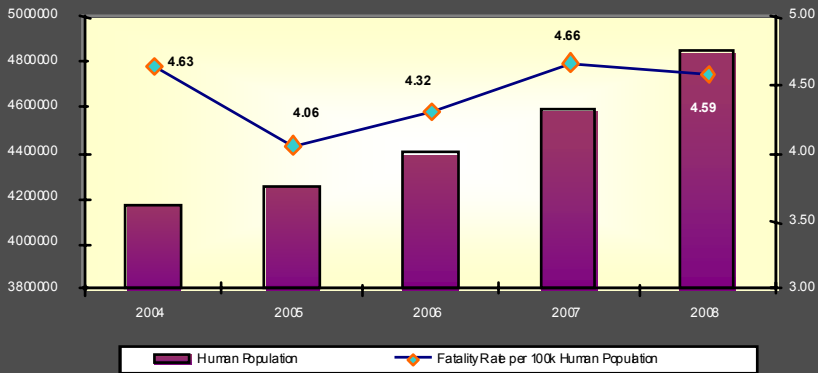
INTRODUCTION

■ Vehicle Types



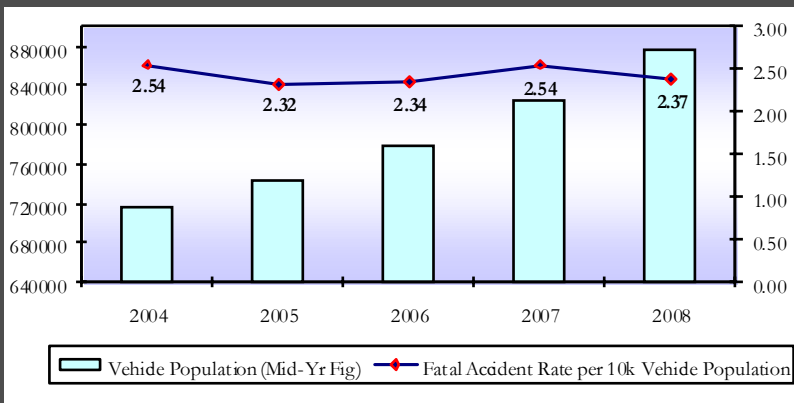
ROAD TRAFFIC SITUATION

Fatality Rates per 100k Human Population (2004 – 2008)



ROAD TRAFFIC SITUATION

Fatal Accident Rates per 10k Vehicle Population (2004 – 2008)



THE 3-PRONGED APPROACH

- **Enforcement**



- **Engagement**



- **Education**



THE 3-PRONGED APPROACH

Enforcement

- **Supported by Legislation / Law**
- **The Road Traffic Act (Chapter 276) provides us the legislative powers to regulate law and order on the roads.**
- **Legislative reviews are done regularly to improve the overall road safety in Singapore, according to the changing operating environment**
- **Examples:**
 - **Amending the licensing regime to enable electric scooters to be operated on Singapore roads, thus promoting green environment**
 - **Cycling on Footways / Widening of footways to facilitate cycling)**



THE 3-PRONGED APPROACH

ENFORCEMENT

- Enforcement elements in TP consist of the Patrol Unit and the Investigation Branch
- In addition, public-spirited citizens also assist TP in keeping our roads safe



THE 3-PRONGED APPROACH

ENFORCEMENT

- Primary roles of Patrol Unit:

Deterrence



Detection



Responding to accidents



THE 3-PRONGED APPROACH

ENFORCEMENT

■ Primary roles of Traffic Investigation Branch:

- Follow through of Patrols' response to accidents and enforcement
- Investigates into traffic offences
- Processing of Summonses
- Handling of Appeals



THE 3-PRONGED APPROACH

ENGAGEMENT

Partners & Stakeholders:

- Land Transport Authority
 - Joint operations, review of road speed limits, traffic mgt during major events, traffic marshalls, etc
- Vehicle Associations, e.g. Heavy Vehicles, Despatch Companies, Public Transport (Taxis, Buses, etc)
 - Road safety talks, sharing of accident trends and hotspots, etc



THE 3-PRONGED APPROACH

ENGAGEMENT

- **General Insurance Association**
 - Non-injury accident management – no need for Police presence to clear roads
- **Media**
 - Crimewatch TV Programme
 - Good arrests/rejection of bribes
 - Sharing of accident statistics
 - Dissemination of Road Safety messages





THE 3-PRONGED APPROACH

ENGAGEMENT

Research :

- **MOU with NUS & NTU**
- **Collaboration with VICOM for Accident Reconstruction**



Entertainment Outlets:

- **Zouk, St James, etc**



Corporate Sponsors:

- **Shell, Singapore Pools, etc**



THE 3-PRONGED APPROACH

EDUCATION

- **TP's objectives:**
 - To initiate road safety campaigns and influence the public to embrace road safety
 - Create platforms and opportunities for community involvement in Road Safety efforts



THE 3-PRONGED APPROACH

EDUCATION

- **TP's Road Safety Outreach Efforts:**
 - Regular campaigns
 - Road Safety Outreach
 - Road Courtesy Campaign
 - Anti-Drink Drive Campaign
 - Annual Shell Traffic Games



THE 3-PRONGED APPROACH

EDUCATION

- Targeted audiences:
 - Engaging the young & elderly
 - Road Safety Park
 - Vulnerable motorcyclists
 - Engaging motorcycle enthusiast groups, schools, institutions and despatch companies



LEVERAGING ON TECHNOLOGY

E-Services

Computerised Theory Test



LEVERAGING ON TECHNOLOGY

Support Systems

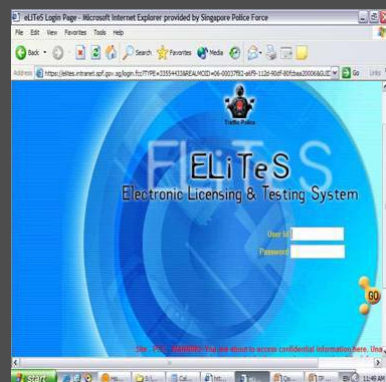
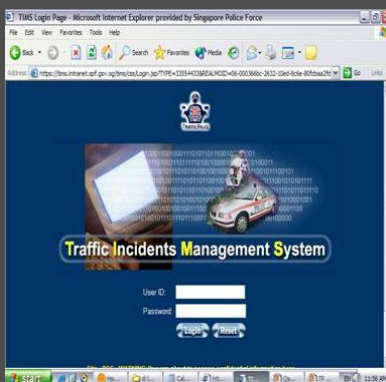
Tablet PC



LEVERAGING ON TECHNOLOGY

SUPPORT SYSTEMS

- **Traffic Incident Management System (TIMS)**
- **Electronic Testing & Licensing System (Elites)**



THE WAY FORWARD

PROJECTS IN THE PIPELINE

- **Multi-storey driving circuit**
 - Scarcity of Land
 - All classes of vehicle training & testing under one roof
- **Formation of Singapore Road Safety Council**
 - To oversee all road safety matters, to promote safe & smooth roads



THE WAY FORWARD

SHARING OF BEST PRACTICES

- **Study Visits**
 - Short informal sharing sessions
- **Customised courses**
 - Through Singapore Police Cooperative Society (SPCS) Consultancy



THE WAY FORWARD



SPCS Consultancy Pte Ltd

- Training and consultancy company founded by the Singapore Police Cooperative Society Ltd and SECOM (Singapore) Pte Ltd in September 2006.
- Consultants and trainers are drawn from retired or serving officers in the Singapore Police Force with vast experience in their respective fields of expertise.
- Medium of instruction can be conducted either in English or Mandarin.



THE WAY FORWARD

TRAINING PROGRAMMES

- Recording statement and interviewing technique
- Management of accused under custody
- Management of a crime scene and collection of evidence
- Planning and managing large scale events
- Traffic management
- Community Policing strategies
- Court craft – preparation of cases for court trial



THE WAY FORWARD

CONSULTANCY

- **Develop, review and set up Investigation Teams and Branches**
- **Develop, review and set up Executive Protection Teams**
- **Develop, review and set up Critical infrastructure Protection Teams**
- **Develop and create Counter Terrorism capabilities**



THE SINGAPORE POLICE FORCE



THANK YOU