

Developing a Sustainable People-Centred Land Transport System in Singapore – Principles of Governance

International Seminar on Green Transport for Growing Cities

2nd September to 3rd September 2009



Mohinder Singh
Director, Research & Planning
Dean, LTA Academy



Challenges & Strategies

A collage of four images illustrating different transport modes: a red and white MRT train on an elevated track, a white double-decker bus with 'SBS Transit' branding, two white taxis, and a view of a multi-lane highway winding through a green, hilly landscape.

Increasing Travel Demand



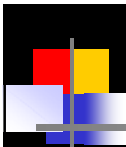
Land Transport Authority Singapore

Limited Land

- Roads ~ 12% of usable land (housing ~ 15%)



Land Transport Authority Singapore



What Does It Mean?

- **Increase in travel demand must be met largely by public transport**
- **Cater to diverse needs of our people**
 - Transport is a basic need
 - Protect environment for future generations

Land Transport Authority Singapore



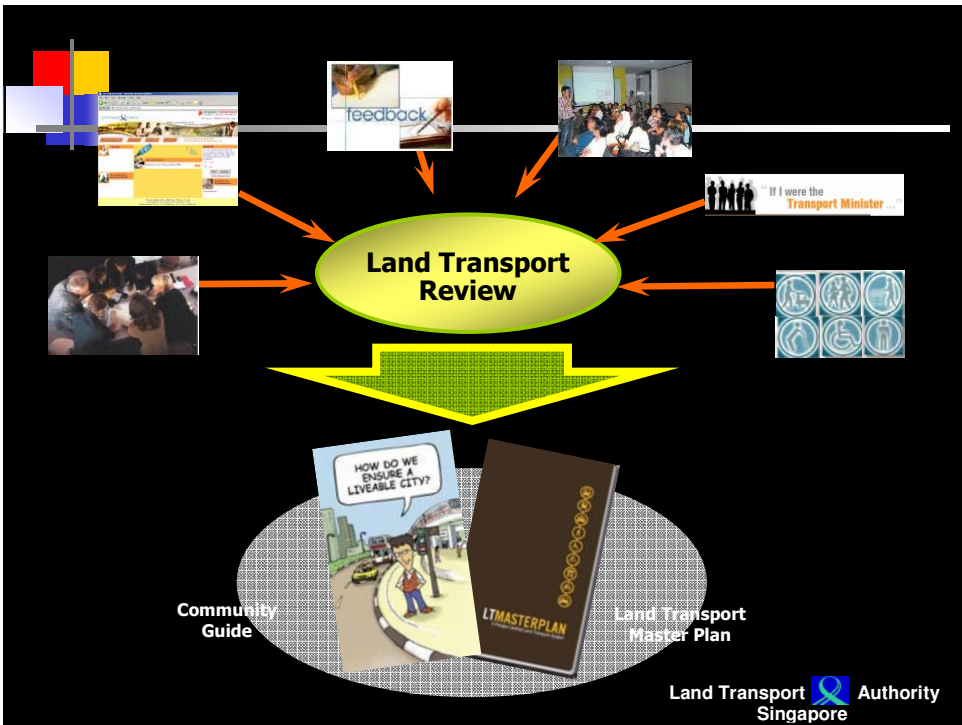
Principles of Governance

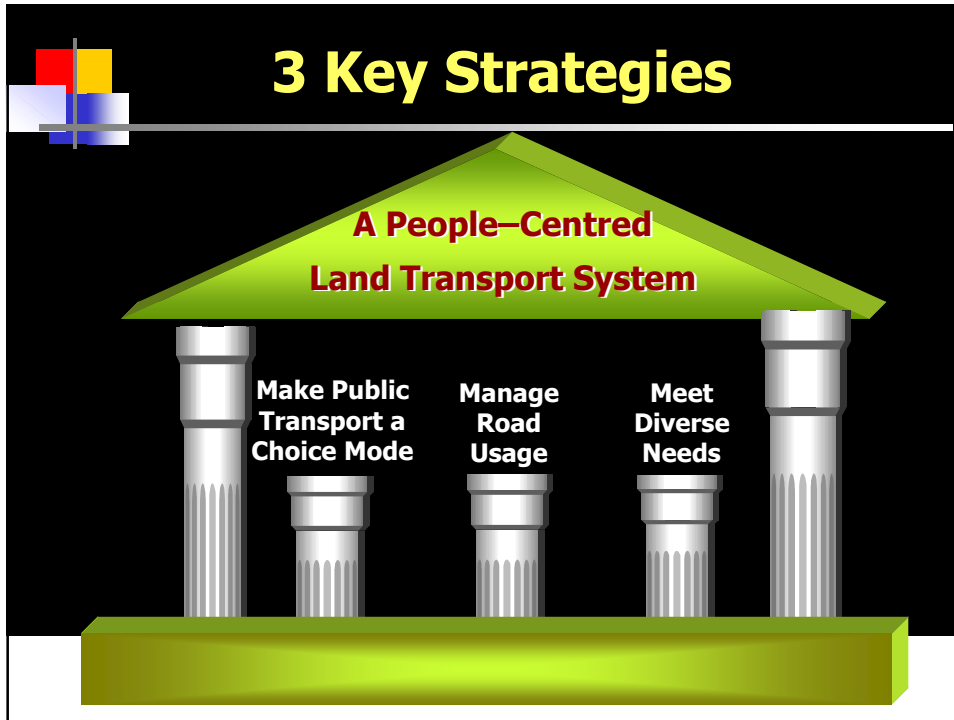
- **Core principles of Spore's transport planners:**
 - **Sound economic solutions** – A world-class transport system needs to be founded on sound, market-oriented solutions
 - **Adaptability & responsiveness** – Constant innovation in anticipation of & in response to changing situations
 - **Sustainability** – Our transport solutions need to be economically, socially & environmentally sustainable. Long-term planning is key.
 - **Involving people** – We need to engage and consult our stakeholders

Land Transport Authority Singapore

Land Transport Review

- **Great Transport Challenge 2020**
- over 4,300 participants
- **Focus Group Discussions**





Make Public Transport a Choice Mode

- Public transport is the most efficient means of transport
- Target: Increase PT modal share (AM peak) from 63% to 70% by 2020
- To do this, we must plan & build our public transport system from the perspective of our commuters

Land Transport Authority Singapore

Make Public Transport a Choice Mode

- Expand rail network
- Central bus network planner
- Provide travel information
- Enhance Physical Accessibility

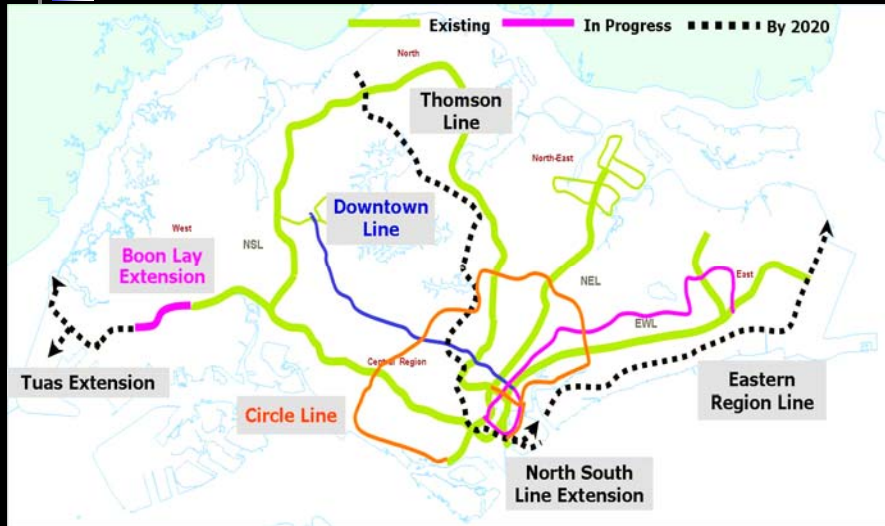


Rapid Transit Network Today



Land Transport Authority
Singapore

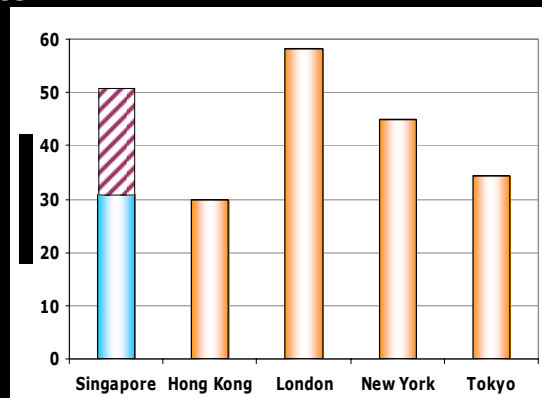
Expanding our RTS Network



Land Transport Authority Singapore

Expanding our RTS Network

- RTS forms the backbone of Singapore's public transport system
- Current network: **148km** (31km/mil ppl)
- By 2020: **278km** (51km/mil ppl)



Land Transport Authority Singapore

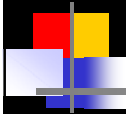
Expanding our RTS Network

- **What does it mean for our people?**
 - Enhanced connectivity across the island
 - Reduced travel times
 - Within CBD, access an MRT station within 5min walk



Central Bus Network Planning

- **LTA to take over central planning of bus network this year**
- **What our commuters can expect:**
 - Feeder buses – More direct routes & greater frequency
 - Seamless and hassle-free transfers



Key Targets by 2020

- **Increase AM peak modal share on public transport from 63% to 70%**
- **85% of public transport commuters to complete their journeys within 60 minutes (door to door), up from 71% today**
 - 80% by 2015



Managing Road Usage

- **Holistic package of measures to keep roads smooth flowing for our motorists, public transport commuters, and goods vehicles**
 - Promote public transport
 - Manage demand for road use – A combination of ownership & usage measures (ERP)
 - Expand the road network



Demand Management

- **Ownership Measures:**
 - **Vehicle Quota System (i.e. COE)**
 - **Other Ownership Costs**
 - Additional Registration Fee
 - Excise Duty
 - Road Tax

- **Usage Measures:**
 - **Electronic Road Pricing (ERP)**
 - **Petrol Duty**

Land Transport Authority Singapore

Electronic Road Pricing (ERP)

- ERP is a congestion management tool
- Pay-as-you-use principle
- Review speed range at 3-month interval, adjust ERP rates

Arterial Roads

20 kph 30 kph


Expressways

45 kph 65 kph

Land Transport Authority Singapore

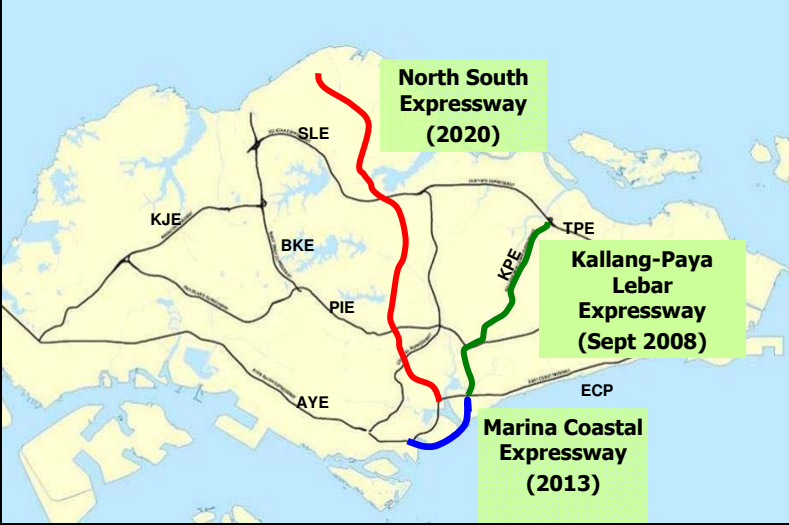
Leverage on Technology

- Traffic Management (*GLIDE*)
- Incident Management (*EMAS*)
- Information dissemination (*traffic.smart*)
- Transport Telematics



Land Transport Authority Singapore

Building Roads for the Future



Land Transport Authority Singapore

Meeting Diverse Needs

- **We must ensure that everyone has access to our land transport system as we build a more inclusive society**
 - Elderly – 20% of residents 65 years and above by 2030
 - Less mobile groups, e.g. wheelchair users, the visually-impaired
 - Lower income groups

Land Transport Authority Singapore

Barrier-Free Accessibility

- **MRT network**
 - Already fully accessible to people with special mobility needs
 - By 2011: additional lifts at stations
- **Wheelchair accessible public buses**
 - Introduced in 2006
 - By 2020: 100%
- **Barrier free road facilities**
 - By 2010: All pedestrian walkways, access to MRT stations, taxi & bus shelters, and public roads will be barrier free



Land Transport Authority Singapore

Low-Income groups

- **Public transport is important in providing access to jobs**
- **Public Transport Council (PTC)**
 - Regulate fares through fare cap formula
 - Tracks proportion of household income spent on public transport to ensure affordability
- **Targeted help for our lower-income families**
 - Government's Workfare Income Supplement Scheme
 - Community schemes such as transport vouchers

Land Transport Authority Singapore

Environmental Sustainability

- **Gearing our transport practices & policies towards supporting environmental aims**


CO₂ Contribution by Sector (2005)

Sector	Contribution (%)
Transport	54%
Buildings	19%
Consumers / Households & Others	16%
Manufacturing	11%

Land Transport Authority Singapore

Sustainable Singapore Blueprint

- Enhancing Public Transport
- Improving Energy and Fuel Efficiency
- Achieving Cleaner Transport



Land Transport Authority Singapore

Community Engagement

- Our people and stakeholders are crucial to developing a more people-centred land transport system
- Our community's support equally if not more crucial during implementation stage
 - Community events, publications, exhibitions, site visits, road shows



Site visits

Meeting residents

Land Transport Authority Singapore

Land Transport Community Partnership Division

- To engage the community more closely on the ground



Community Outreach Programme

Community




Engage grassroots organisations through regular meetings



Engaging our People

- **Land Transport Gallery**
 - Opened in Jan 08 – aim to engage different stakeholders
 - Showcase developments in Singapore’s land transport system
- **VR-10 e-Game, Youth Outreach Programme**
 - UITP “Youth Project Award” in 2007
 - Launched in 2005 – aim to educate primary school students on land transport facts



Land Transport Authority Singapore

**Fostering greater ownership by all of our people
of our land transport system**

**The Core of a People-Centred
Land Transport System**

